

Fantasy Make Up
National Esthetics Committee
2010 – 2011

Step 1: Prepare skin. Cleanse, tone and moisturize.

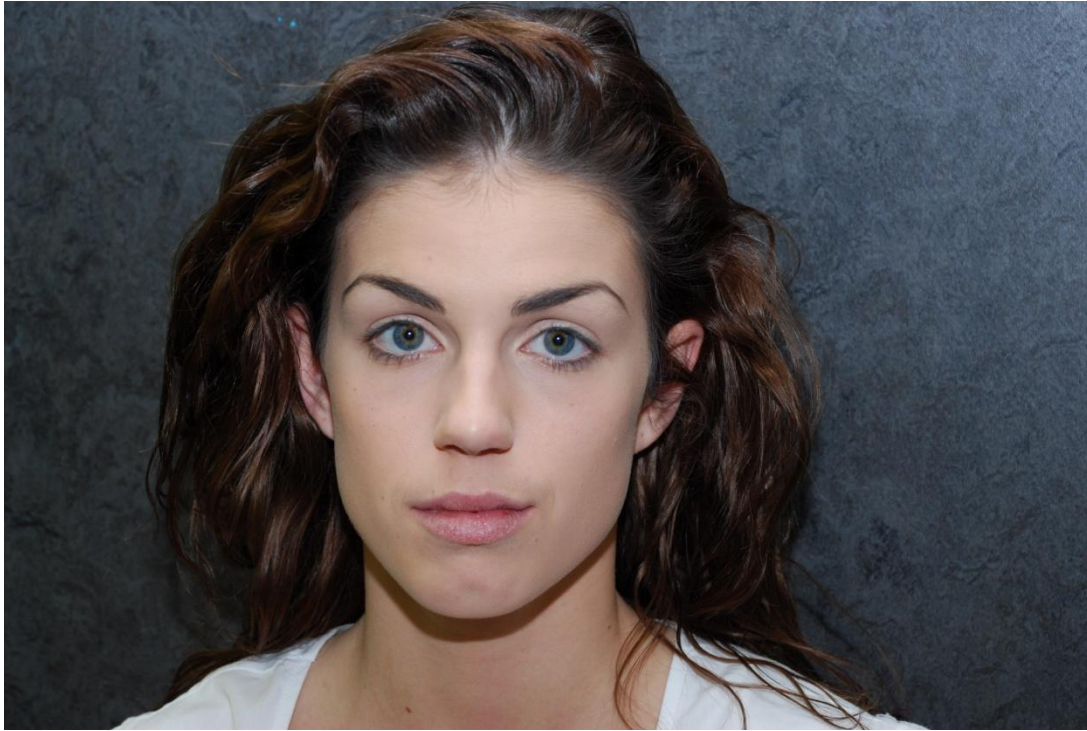
Step 2: Apply foundation and any illusion tones (green, purple or yellow base) if needed.



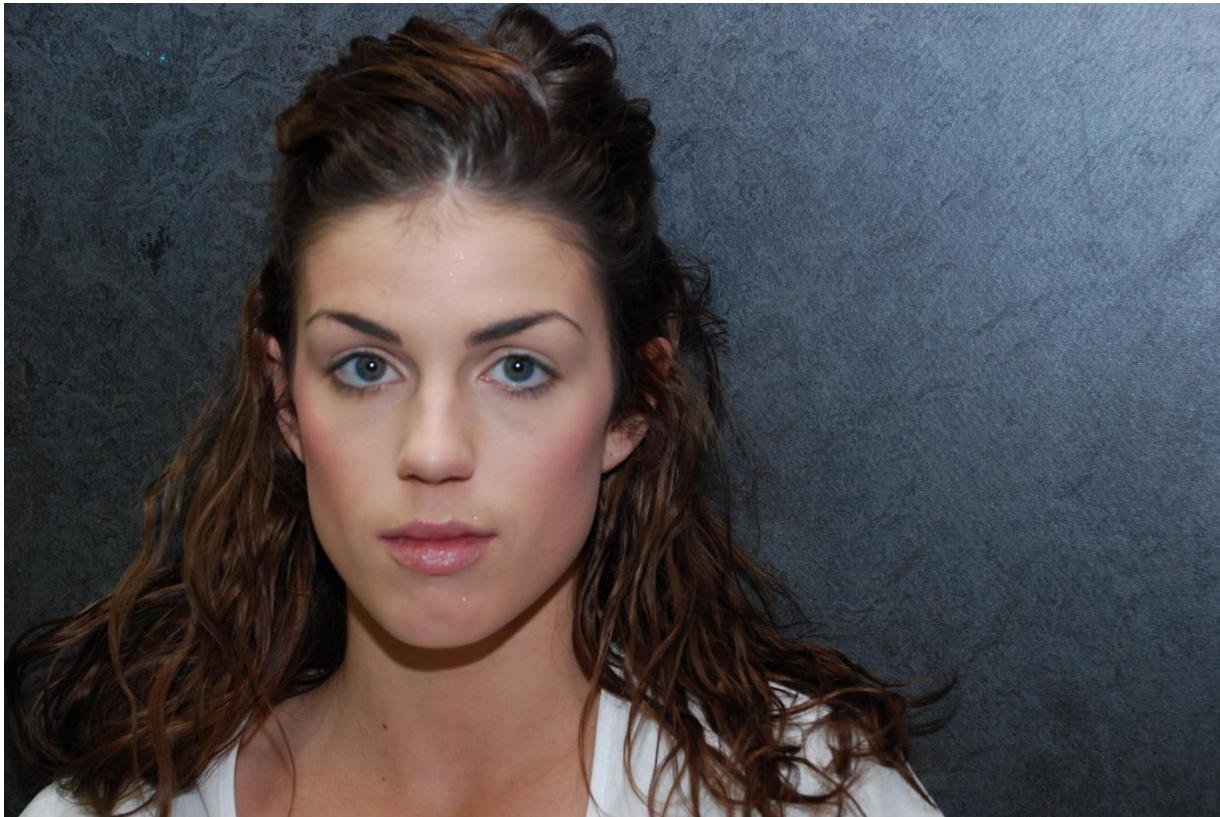
Set 3: Highlight and contour as needed, according to models face shape.



Step 4: Blend highlighter and contour.



Step 5: Apply blush.



Step 6: Apply eye shadow base and colors to blend.



Step 7: Apply eye shadow color under the eye.



Step 8: Apply design including eyeliner.



Step 9: Add colors to the eye design. Touch up eyeliner if needed and add mascara.



Step 10: Apply rhinestone gems, lip liner and lip color.



Step 11: After judging, competitors will be asked to add a related design of their choice, on the right side of the model's neck, while maintaining harmony and symmetry. A black hat (of competitor's choice) must be added to complete the look. Judging will then take place again and marks awarded for creativity.

**NOTE: Eye shadow shades may vary according to sponsor.
Please check the scope regularly for sponsor announcement.**